



# **ARCHITECTURE & FURNITURE ALUMINUM**

1st Edition



TABLE OF CONTENT

Company Introduction	03
Manufacturing Capability	04
Products	07
Quality Management	12
Standards & Specifications	14



# KIMSEN INDUSTRIAL CORPORATION

- Established in 2013, KIMSEN INDUSTRIAL CORPORATION is a professional company active in the field of manufacturing extruded aluminum, architecture & furniture aluminum in Vietnam by international standards.

**Factory area:** 35,000 m<sup>2</sup>

**Business category:** Manufacturing extruded aluminum, architecture & furniture aluminum (building facade, windows & doors, curtain, ceiling & sun louver, etc.)

**Capacity:** 10,000 tons of aluminum per year

**Technical standards:** JIS H4100:2015, EN 755-9:2016, ASTM B221-B221M-14

**Management systems:** Quality Management System ISO 9001:2015, Environmental Management System ISO 14001:2015, 5S - Kaizen Method



# MANUFACTURING CAPABILITY

■ KIMSEN has gained customers' trust with our strong production capacity:

- ▶ 9 years of experience in aluminum extrusion
- ▶ 3 extrusion lines: Extrusion Workshop, Anodizing Workshop, Powder coating Workshop
- ▶ Maximum stroke length: 7.2 meters
- ▶ Annual output: 10,000 tons
- ▶ Supplying for domestic market and export to 9 countries



## Extrusion Workshop

Aluminum alloy: 6063

Heat treatment: T5, T6

Maximum dimension of the section: 200 mm







## Anodizing Workshop

**Color range:** White, grey, black, etc.

**Type:** Natural, sand blasting, ED coating

**Product Standard:** JIS H8601 & JIS H8602, AAMA611





### Powder coating Workshop

Product Standard: AAMA 2603, 2604, 2605-13, QUALICOAT

Powder paint of reputable paint manufacturers







# PRODUCTS

Aluminum extrusions serve as frames for various structures ranging from residential houses to multi-storey buildings. Aluminum is a material of high environmental stability and during the maintenance period does not require any maintenance or repair.

Currently KIMSEN is providing aluminum extrusion for several trends in the field of construction, where aluminum systems are the most effective solution.

- ▶ Windows and Doors Systems
- ▶ Building Facade (Curtain Wall Systems)
- ▶ Furniture (Interior Partitions, Sun Louvers, Curtains & Ceilings, etc.)

**WE PROVIDE OEM SERVICE, CUSTOM COLOR AND STYLE**

# ALUMINUM WINDOWS & DOORS

## PROFESSIONAL OEM SERVICE, CUSTOM COLOR AND STYLE

Aluminum frames increase the durability, longevity, and functionality of windows. They also offer excellent performance in terms of security, sound insulation and waterproofing. A detailed painting process helps ensure a uniform, durable finish.





## ALUMINUM WINDOWS & DOORS

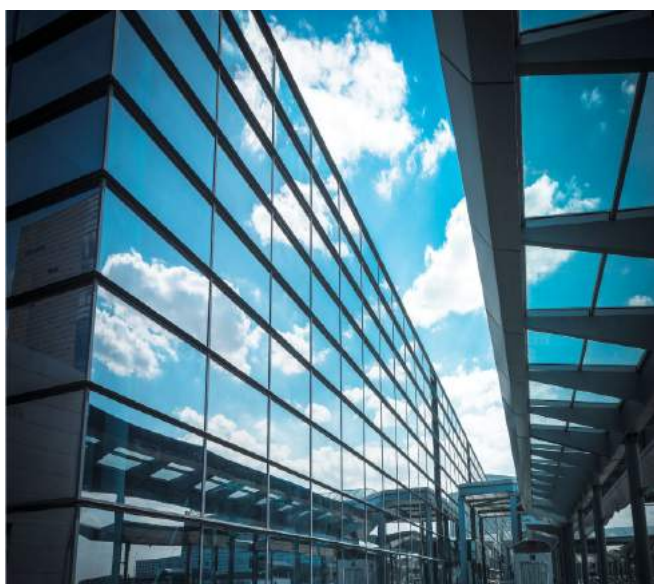
With a system of modern extrusion and surface treatment lines, KIMSEN is capable of providing high quality aluminum doors. With a wide color range and easy design customization, aluminum is the most affordable, uncomplicated and durable choice.



## BUILDING FACADE

Aluminum building facade is an excellent alternative to traditional cladding options such as wood or windshields.

Comparing with different material on curtain wall, aluminum's strength and durability make it a perfect material for construction projects, and its lightweight makes installation a breeze. Aluminum is also an easy-to-recycle material, which means you are using eco-friendly materials in your project. KIMSEN offers a variety of surface treatment, which adds aesthetic appeal to any architectural project.





# FUNITURE ALUMINUM

Aluminum furniture is a type of furniture produced with the development of modern industrial technology. As a new type of furniture material, aluminum furniture has a lot of advantages that make it more and more popular.



ALUMINUM CURTAIN



ALUMINUM CEILING

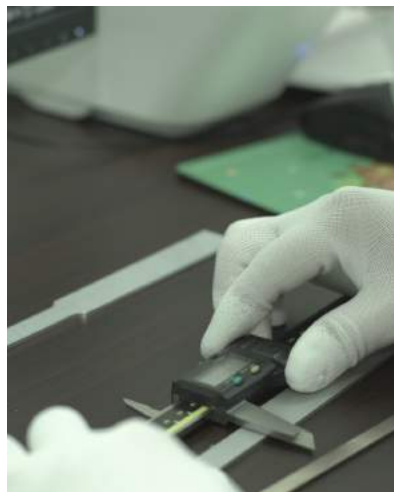


ALUMINUM SUN LOUVER



# QUALITY MANAGEMENT

KIMSEN has been recognized as an ISO 9001 and ISO 14001 compliant system since 2016. Along with international standards for product quality, we apply Japanese 5S - Kaizen and Lean manufacturing methods to maintain stringent quality standards in manufacturing processes, ensuring rigorous quality checks at every stage of production.





# PRODUCT STANDARDS & SPECIFICATIONS

## 1 Product advantages

- ▶ Lightweight and durable
- ▶ High aesthetic
- ▶ Non-magnetic & non-toxic
- ▶ Easy to fabricate & elastic
- ▶ Multi forms & colors
- ▶ Recyclable

## 2 Surface treatment

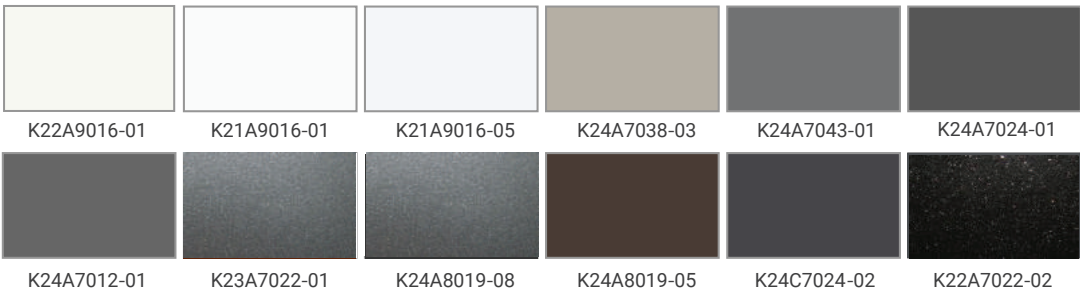
Anode	8 - 12 $\mu\text{m}$
Anode ED	12 - 18 $\mu\text{m}$
Powder coating	$\geq 60 \mu\text{m}$
Type	Natural, Sand blasting, ED coating, Powder coating
Color range	White, grey, black, etc.

In case you have other requirements, please contact us for further information.

### ▶ Typical Anodizing colors



### ▶ Typical Powder coating colors



*Powder coating color matching available as per customer's request.*

Actual anodizing and powder coating colors may differ from the images.

# PRODUCT STANDARDS & SPECIFICATIONS

## 3 Chemical composition (Alloy No.: 6063)

Chemical Composition % (mass fraction)											
Alloy No.	Si	Fe	Cu	Mn	Mg	Cr	Zn	Ti	Other		Al
									Each	Total	
6063	0.2 - 0.6	0.35 max	0.1 max	0.1 max	0.45 - 0.9	0.1 max	0.1 max	0.1 max	0.05 max	0.15 max	Remainder

## 4 Mechanical properties

Alloy No.	Temper Grade	Mechanical properties							
		Wall Thickness at specified measuring point (mm)	Tensile stress (N/mm <sup>2</sup> )	Proof stress (N/mm <sup>2</sup> )	Elongation %		Hardness test		
					A 50 (mm)	A	Wall Thickness at specified measuring point (mm)	HV5	Hw
6063	T5	12 max	150 min	110 min	8 min	7 min	0.8 min	58 min	8 min
		Over 12 up to and incl. 25	145 min	105 min	8 min	7 min			
	T6	3 max	205 min	170 min	8 min	-	-	-	10 min
		Over 3 up to and incl. 25	205 min	170 min	10 min	-	-	-	10 min

## 5 Dimension and tolerances

- ▶ Tolerances on sectional dimension

▶ Tolerances on camber

▶ Tolerances on contour
- ▶ Tolerances on length

▶ Tolerances on flatness

▶ Tolerances on corner radius
- ▶ Tolerances on angularity

▶ Tolerances on twist

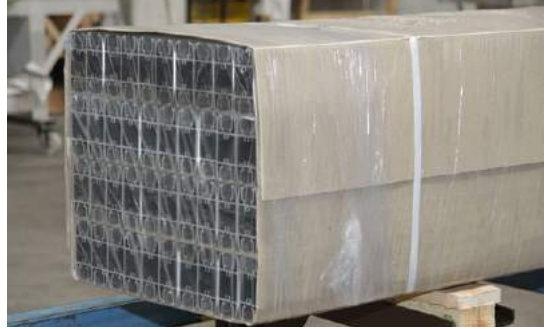
▶ Tolerances on thickness

\*According to standards & specifications as JIS H 4100:2015, EN 755-9:2016, ASTM B221/B221M-14.



## PACKAGING

KIMSEN provides quality standard packaging services, which can be customized to customer's specific packaging requirements.



## KIMSEN EXPORT COUNTRIES

Including aluminum extrusion parts and components for other industries.





## CONTACT US

### ADDRESS

#### Head Office & Factory

Yen Phong Industrial Park, Bac Ninh Pro., Vietnam

#### Hanoi Office

TTC Tower, No. 19 Duy Tan Str., Hanoi, Vietnam

### CONTACT

**Vietnam:** +84 981 261 322 (Whatsapp/LINE) | duong-quynh.anh@kimsen.vn

**USA:** +1 562-353-3259 (Whatsapp/LINE) | kevin-hwang@kimsen.vn



[www.kimsen.vn](http://www.kimsen.vn)



[www.kimsen.us](http://www.kimsen.us)



[info@kimsen.vn](mailto:info@kimsen.vn)

\*Revised publication effective October 2022.  
Specifications are subject to change without notice.