



ALUMINUM EXTRUSION FOR
**TRUCK BODY FRAME/
BATTERY HOUSING**

ABOUT US



KIMSEN INDUSTRIAL CORPORATION

Established in 2013, KIMSEN INDUSTRIAL CORPORATION is a professional company active in the field of manufacturing extruded aluminum, die cast aluminum, machined components & assemblies in Vietnam by international standards.

Factory area: 35,000 m²

Business category: Manufacturing extruded aluminum, die cast aluminum, machined components & assemblies

Technical standards: JIS H4100:2015, EN 755-9:2016, ASTM B221-B221M-14

Management systems: Quality Management System ISO 9001:2015, Environmental Management System ISO 14001:2015, 5S - Kaizen Method



10 years of experience
in aluminum extrusion



7.2 meters
maximum stroke length



10,000 tons of aluminum
per year



3 extrusion lines
(800 tons/month)



10 exports to
countries



30 million components
per year



EXTRUSION WORKSHOP

Aluminum alloy: 6063, 6005, 6082, 6061, 5052

Heat treatment: T5, T6

Maximum dimension of the section: 200mm



ANODIZING WORKSHOP

Color range: White, grey, black, etc.

Type: Natural, sand blasting, ED coating

Product Standard: JIS H8602 & JIS H8601, AAMA611



POWDER COATING WORKSHOP

Product Standard: AAMA 2603, 2604, 2605-13, QUALICOAT

Powder paint of reputable paint manufacturers



CNC WORKSHOP

Services: Milling, cutting, drilling, tapping, etc.

Machine brands: Makino, Fanuc, JIH, Emmegi, etc.

Accuracy: $\pm 0.01 - 0.02$ mm



STAMPING WORKSHOP

Services: Cutting, punching, laser engraving, screen-printing, etc.

WE PROVIDE OEM SERVICE, CUSTOM COLOR AND STYLE



DIRECT FROM MANUFACTURER

Get competitive advantage in pricing and support by working directly with OEM Manufacturer



ENHANCED FLEXIBILITY

KIMSEN team is able to make modifications to the system as customer specific requirements



LOGISTICS BENEFITS

Logistics savings is compounded by the convenience of sourcing direct from the manufacturer, we provide FOB and DDP terms as per your requests



INDUSTRY KNOWLEDGE & MANUFACTURING CAPABILITIES

As the supplier and manufacturer of the racking system, KIMSEN is more responsive to our customers through direct product interaction enhanced by deep industry knowledge at all levels

TRUCK BODY PARTS



TRUCK BODY FRAME

Aluminum truck bodies are a great choice for the vast majority of industries. Even if aluminum bodies cost more money upfront than a steel alternative, they prove their value with a handful of benefits. Aluminum is lighter and naturally more resistant to corrosion.

- Fuel Savings
- Increased Payload and Efficiency
- Less Body Maintenance
- An Option for Lighter Trucks

SERVICES

CNC machining/Punching/Welding/Bending/Stamping
Assembly & Packing

MATERIAL AVAILABLE

6005/6061/6082/6063/5052

FINISH

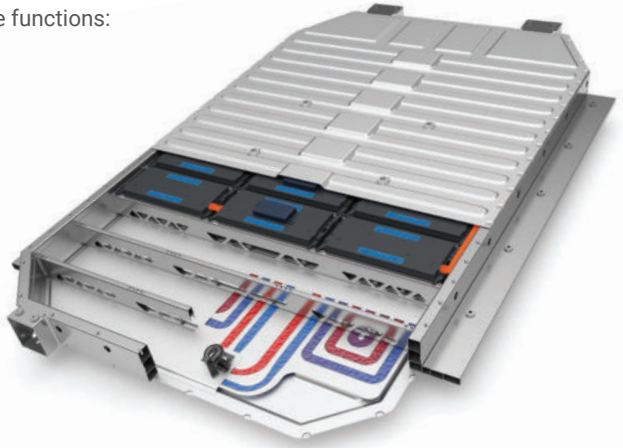
Mill finish/Anodizing/Powder coat

EV BATTERY HOUSING

Extrusions deliver an efficient geometry offering multiple functions:

- Crash energy absorption
- Torsional stiffness
- Considerable strength with minimal weight
- Leak-free fluid transfer through structural members

Stiff, strong, and straight extrusions provide structural support, crash management, fluid transport, and robust mounts in effective battery box designs.

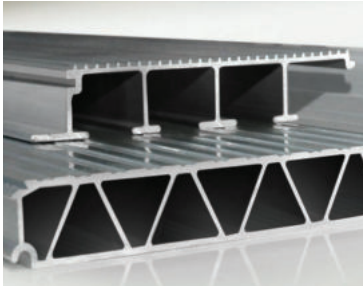


WHY EXTRUSION?



- | | |
|---|--|
| ● Piece cost
Multi-functional extrusions | ● Corrosion resistance
Aluminum is naturally corrosion resistant. No coatings required |
| ● Tooling cost
Tooling is much lower than castings | ● Weight
Economical lightweighting |
| ● Development time
Tooling in 2 weeks | ● Maintenance
Threaded hole options, flow drill screws |
| ● Thermal management
Aluminum conducts heat efficiently | ● Structural Integrity
Strong, sectional stiffness, crash structures |

** Source: Aluminum Extruders Council*



**ALUMINUM EXTRUSION
FLOORING**



SIDE STEPS



AUTOMOBILE FOOT PEDAL



**INTERIOR VAN
SHELVING SYSTEM**



EV BATTERY HOUSING

CUSTOMIZED ALUMINUM SOLUTIONS DEVELOPMENT

STEP 01

INITIAL ENGAGEMENT

- Preliminary high-level understanding of your business & project requirements



STEP 02

TECHNICAL REVIEW

- Technical team to discuss in details of product requirements and give MFR (Manufacturing Feasibility Review)



STEP 03

SAMPLE PRODUCTION & APPROVALS

- Sample production based on MFR agreed by both customer and manufacturer
- All technical specifications for review & sign-off



STEP 04

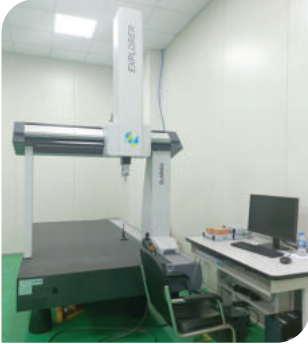
MASS PRODUCTION & DELIVERY

- Kick-start mass production based on validate MFR sign-off
- Provide confirmed ETA for delivery schedule



QUALITY MANAGEMENT

KIMSEN has been recognized as an ISO 9001 and ISO 14001 compliant system since 2016. Along with international standards for product quality, we apply Japanese 5S - Kaizen and Lean manufacturing methods to maintain stringent quality standards in manufacturing processes, ensuring rigorous quality checks at every stage of production.



CMM measurement



Hardness testing



Tensile stress testing

PACKAGING



Including aluminum extrusion parts and components for other industries. KIMSEN provides quality standard packaging services, which can be customized to customer's specific packaging requirements.





WEDNESDAY - SARTUDAY
MAR. 30TH - APR. 1ST 2023

KENTUCKY EXPO CENTER
LOUISVILLE, KY

BOOTH #61144 | West Wing



Head Office & Factory

Yen Phong Industrial Park, Bac Ninh Pro., Vietnam

Hanoi Office

TTC Tower, No. 19 Duy Tan Str., Hanoi, Vietnam

Phone: +1 562-353-3259 (WhatsApp/LINE) (US Based)

+84 981-261-322 (WhatsApp/LINE) (VN Based)

www.kimsen.us

www.kimsen.vn

info@kimsen.vn